

# Reel Taping Specifications for SMA / SMB / SMC

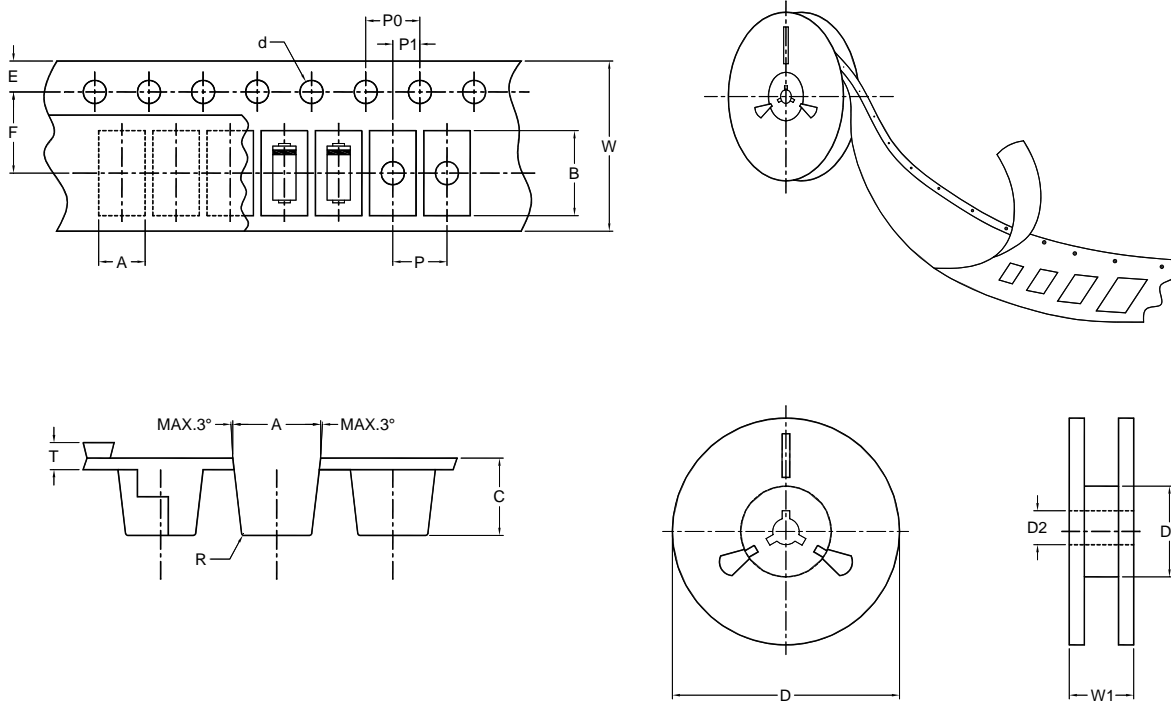
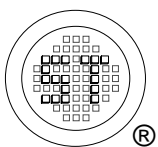


Fig. : Configuration of flat MELF taping (SMA / SMB / SMC)

Item	Symbol	DO-214AC (SMA) mm (inch)	DO214-AA (SMB) mm (inch)	DO214-AB (SMC) mm (inch)
Carrier width	A	3.0 ±0.1 (0.122 ±0.004)	3.65 ±0.1 (0.148 ±0.004)	6.0 ±0.1 (0.24 ±0.004)
Carrier length	B	5.4 ±0.1 (0.213 ±0.004)	5.69 ±0.1 (0.224 ±0.004)	8.30 ±0.1 (0.33 ±0.004)
Carrier depth	C	2.4 ±0.1 (0.098 ±0.004)	2.67 ±0.1 (0.105 ±0.004)	2.5 ±0.1 (0.1 ±0.004)
Sprocket hole	d	1.5 ±0.1 (0.059 ±0.004)	1.5 ±0.1 (0.059 ±0.004)	1.5 ±0.1 (0.059 ±0.004)
Reel outside diameter	D	178 ±2 (7 ±0.079)	178 ±2 (7 ±0.079)	178 ±2 (7 ±0.079)
Reel inner diameter	D1	50 min.	50 min.	50 min.
Feed hole diameter	D2	13 ±0.5 (0.512 ±0.02)	13 ±0.5 (0.512 ±0.02)	13 ±0.5 (0.512 ±0.02)
Strocker hole position	E	1.5 ±0.1 (0.059 ±0.004)	1.5 ±0.1 (0.059 ±0.004)	1.5 ±0.1 (0.059 ±0.004)
Punch hole position	F	5.65 ±0.05 (0.222 ±0.002)	5.65 ±0.05 (0.222 ±0.002)	7.65 ±0.05 (0.301 ±0.002)
Punch hole pitch	P	4 ±0.1 (0.157 ±0.004)	8 ±0.1 (0.315 ±0.004)	8 ±0.1 (0.315 ±0.004)
Sprocket hole pitch	P0	4 ±0.1 (0.157 ±0.004)	4 ±0.1 (0.157 ±0.004)	4 ±0.1 (0.157 ±0.004)
Embossment center	P1	2 ±0.1 (0.079 ±0.004)	2 ±0.1 (0.079 ±0.004)	4 ±0.1 (0.157 ±0.004)
Total tape thickness	T	0.3 ±0.05 (0.012 ±0.002)	0.6 Max.	0.6 Max.
Tape width	W	12 ±0.2 (0.472 ±0.008)	12 ±0.2 (0.472 ±0.008)	16 ±0.2 (0.63 ±0.008)
Reel with	W1	16.8 ±2 (0.661 ±0.079)	16.8 ±2 (0.661 ±0.079)	24 ±2 (0.945 ±0.079)

Note: Devices are packed in accordance with EIA standard RS-481-A and specification given above.



**SEMTECH ELECTRONICS LTD.**  
Subsidiary of Sino-Tech International (BVI) Limited



Dated : 23/04/2008